

## Vision for Reconstruction Area

*It has been two years since the dreadful events of January 2011, and our community of Grantham has rebuilt itself in a way which shows great pride, strength and resilience, while staying true to our history and character and respecting those who suffered during those tragic events.*

*The main street along Anzac Avenue is thriving again, with the new store, hotel and information centre proudly rebuilt stronger and better. Members of our community and visitors alike have embraced the businesses in the main street so they are more prosperous than ever. The main street is a strong heart to our once again strong community.*

*The former residential area west of Harris Street is now a park much valued by our community as a place to reflect. Some of the flood-affected areas west along the Gatton-Helidon Road have converted back into rural uses, although a few strong highset homes have been built by those who have chosen to stay and rebuild in the area.*

*As I enter William Street I notice distinctive and colourful shade structures which are home to weekend fruit stalls and are a hive of activity with residents and visitors buying their weekly produce. There are a few cafés located under the camphor laurels in William Street which are very popular as a meeting place for friends to catch up and share a light meal whilst overlooking the natural areas of Sandy Creek. Passing under the railway line, the restored butter factory sits proudly at the entry to this part of the town and is used every day by different members of the community.*

*Travelling along Victor Street, I can hear children in the primary school running and laughing and watching as a train passes by. Houses opposite the school are much as they have always been.*

*The big change is on land north of here, off Boxmoor Street, where a major new part of town has been built up nice and high overlooking the cropping lands and flood plain to the south. Just two years on, many of our residents have proudly rebuilt their homes and lives in this part of town. Children can be heard kicking a football and playing on the swings in the new parkland which is central to this new part of town. The road into this new area stitches the community together providing a high level of access for residents and visitors between the main street and the old and new parts of town.*

*There are many different lot sizes in the new part of town and I know that as I get older, I'll be able to move to a smaller lot and stay close to my family without leaving the town that I know and love.*

*Major new facilities have started to emerge as well. There are plans to expand the town further north and east, and introduce more community facilities and parks in the new part of town. Whilst not developed yet, the new showgrounds which are planned adjacent to the Warrego Highway will be a great addition to our town when they are built.*

*There are noticeably more jobs in town now, with some new rural businesses that have been built to the east of the main street supporting the farming and rural activities which are the foundation of our town.*

*Grantham is an amazing place – we have endured tragedy and emerged stronger and prouder, with a wonderful mix of history and character and strong and vibrant new areas that are helping us achieve a safe and bright new future.*



# GRANTHAM TIME



James 'Cocky' Rogers, brings 300 sheep onto the Grantham Run.

1843

Jagara tribesmen are resisting the intruders who are now occupying their ancestral hunting grounds.

1844

Charles William Pitts now holds the Grantham Run, which has an estimated carrying capacity of 8000 sheep.

1848



The railway line is built through Sandy Creek (the original name for the siding at Grantham).

1866

James Craig becomes licensee of the first watering hole at Grantham - the Sandy Creek Hotel.

1871

The Queensland Government starts resuming land under the Crown Lands Alienation Act of 1868, and the Homestead Areas Act of 1873. The Grantham Run is thrown open for free selection.

1873

The Grantham Dramatic Group and Orchestra start providing regular and popular entertainment.

1920s

The School of Arts acquires land on the former railway reserve opposite the Butter Factory and establishes Grantham's first library.

1917/18



The Baltzer family establishes a bootmaking and saddlery business opposite a bakery in Harris Street.

1918

The Grantham Hotel on Sandy Creek is destroyed by fire.

On July 16 Grantham's new State School opens.

1917



New cattle and pig yards are built at the railway station.

1916

The railway line from Grantham to Helidon is duplicated.

1914



'Jack' Nagina Singh opens Grantham General Store, selling everything from a pin to an anchor.

1926

A loan is available for a water supply for Grantham residents. Bores and windmills with troughs are installed in Gatton, Helidon and Anzac Avenue, Grantham.

1927



National Bank of Australasia moves into a new timber triangular building known locally as the 'Wedge of Cheese'.

1928



Residents meet at the School of Arts on April 30 to establish St Gabriel's Anglican Church.

1931

In August, the first street lights in Grantham are switched on.

1936



Electricity is installed at the railway station.

1938

The Armstrong family's fruit and vegetable shop opens on the highway. More and more fruit and vegetable stalls are opening in Grantham during the main fruit and vegetable seasons.

1964



Kevin and Shirley Toohill (a vigoro team coach) begin operating K & S Toohill Transport Pty Ltd.

1962



Dwyers Manufacturing Company opens on the highway. The company also operates Grantham Motors.

1961

Grantham's soccer team the 'Lockyer Stars' continues playing strongly throughout the 1960s and 1970s.

1960s

Floodwaters inundate Grantham.

At about this time plant and sand pumping by Readymix concrete starts at the creek.

1959

Hailstorm strikes Grantham smashing windows at the Butter Factory and Grantham State School. Much of the district's fruit crop is wiped out.

1956

Grantham Post Office is destroyed by fire. Operations are transferred to a former butcher's shop.

1965



The Grantham Hotel moves in April from William Street, after 50 years, to a new site on the Warrego Highway.

1967

The Lockyer Little Theatre operates a small theatre at Grantham.

The Warrego Highway is rerouted through Grantham.

1968

Grantham Butter Factory closes on June 30.

A mini-tornado rips through Grantham in November. Citrus trees are stripped, vegetable crops ruined and buildings damaged.

1971

Land on the corner of William and Railway Streets becomes Bugler Park in recognition of the Bugler family which has been prominent in the Grantham district for 85 years.

1973



More flooding causes substantial damage to businesses and houses.

1974

Grantham is an amazing place which has emerged stronger and prouder, with a wonderful mix of history and character and strong and vibrant new areas that are helping achieve a safe and bright new future.

2013



June 7, the Lockyer Valley Regional Council Mayor and Deputy Premier turn the first sod in stage one of a major new housing development on higher ground.

2011

January 10, flash flooding devastates Grantham, Murphy's Creek, Postman's Ridge, Helidon and Withcott. Deaths and property losses are recorded.

2011



Grantham State School celebrates its centenary.

2005

More flooding affects business life in 1999

The Grantham Water Tower, which has been a landmark for many years, is removed in August.

1999/2000



A major employment boost comes in July with the opening of Morex Meat Australia. The company later changes its name to Valley Beef Company.

1997



# LINE ~ 1843 - 2011

Orchards are established in the district by Stationmaster Charlie Wilkinson who was related to Grantham's first blacksmith, Albert Wilkinson. Albert's blacksmith shop was on the creek bank in William Street across from the Post Office.

1880s

Andrew Scott buys part of the original Grantham Run, including the homestead, on the death of A.V. Carpendale. Grantham Station, which now comprises about 250 sq miles, is stocked with cattle.

1884



First land sales establish Grantham Town in the Lockyer Valley. The town is named by the first white settlers after their former home town of Grantham in Lincolnshire, 108 miles (174km) north of London.

1886

Major flooding: The Lower Tent Hill spills its banks and the Lockyer Creek flows into north Gatton and Grantham flats are covered. The flood waters are five feet (1.52m) above the previous floods of 1863, '64, '87 and '89. Further flooding occurs in 1893.

1890

Albert Scott, the founder of Wanstead at Veradilla, settles on the land near Grantham. Two years later he builds a family home from large slabs and shingles, cut from timber grown on the property.

1895



Grantham Scrub School opens on the corner of Scrub Road and Poole's Road.

1896



Rugby League is now in full swing and the Grantham Rugby League team goes on to win the Lockyer premiership from 1919 to 1922

1913

One of the first important land sales with sub-divisions from the Grantham Estate gets underway on May 10.

1910



The Grantham Butter Factory opens and the Grantham Cattle Dip Company is formed to control ticks.

1907



Grantham State School opens on January 23. There are now 800 dairy farmers in the Lockyer Valley

1905



During the year 4313 tons of agricultural produce are loaded onto railway wagons at Grantham.

1901



G William Henderson becomes the first licensee of the Grantham Hotel on the banks of Sandy Creek.

1900



Fire destroys the Coronation Hotel for a second time.

• WWII declared.

1939

School children practice putting a cork in their mouth and cotton wool in their ears to protect them from bomb blasts. No bombs fall on Grantham and no enemy aircraft are seen.

1940s

John 'Jack' Lund, bullocky and timber getter is in charge of a team of 12 or more bullocks hauling timber from the Sandy Creek district for Hood's Sawmill at Gatton.

1941



Mortleman's Store opposite the telephone exchange closes.

1940/41

Fire destroys the Coronation Hotel...again.

1941/42



The Grantham Boys Cricket Club formed.

1944

Twomacs Garage is built on the Warrego Highway. It's run by Tommy Grice and 'Mac' Crust.



Grantham Scrub School closes.

1951

A radio program is exchanged between England and Australia. The program is called 'Namesake Towns - Grantham to Grantham'.

1952



The Water Melon Carnivals begin to celebrate the harvesting of citrus fruit.

1950s

The Grantham Amateur Players stage their first variety show in McGarva's Hall on June 4.

1949

Street signs are requested for Grantham in readiness for the town's first letter delivery service.

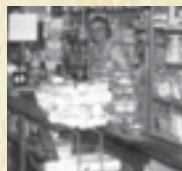
1947

Padgett's travelling picture show arrives in Grantham with carbon arc projectors and a slide show for audiences in McGarva's Hall - later known as Grantham Hall.

1945

David Topp opens a hot bread kitchen.

1975



Singh's General Store, which opened in 1926, closes its doors.

1976



The first Orange Festival is held to raise money for charities

1978

Fire, started by children playing with matches, destroys the produce business of W.E. Morgan and Sons.

Public toilets are constructed alongside the Warrego Highway at Grantham.

1979

Flooding: Lockyer Creek peaks at 12 metres and floodwaters build up at Dinner Corner - named for the area where drovers had dinner before bedding down for the night.

1983

An old iron overhead footbridge, no longer in use at the Toowoomba Railway Station is installed across Sandy Creek to link the two ovals.

1985



The Grantham Meat Mart, moves to a new shopping centre at Withcott, due to declining trade caused by the Grantham bypass.

1996

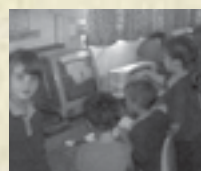
Grantham Post Office closes.

1994



Falling patronage forces the closure of the Grantham and Forest Hill Railway Stations on July 31.

1992



Computers are introduced to students at Grantham School.

1990s

The \$10 million Gatton Bypass comes into operation and traffic is diverted away from Grantham.

The Grantham Rural Fire Brigade is formed in August.

1989

More flooding with major crop losses.

The first Tourist Information Centre and café opens in Grantham in the former Singh's store.

1988